

CUCIF Sophisticated Instrumentation – II

For more query contact us at cucif@chitkara.edu.in

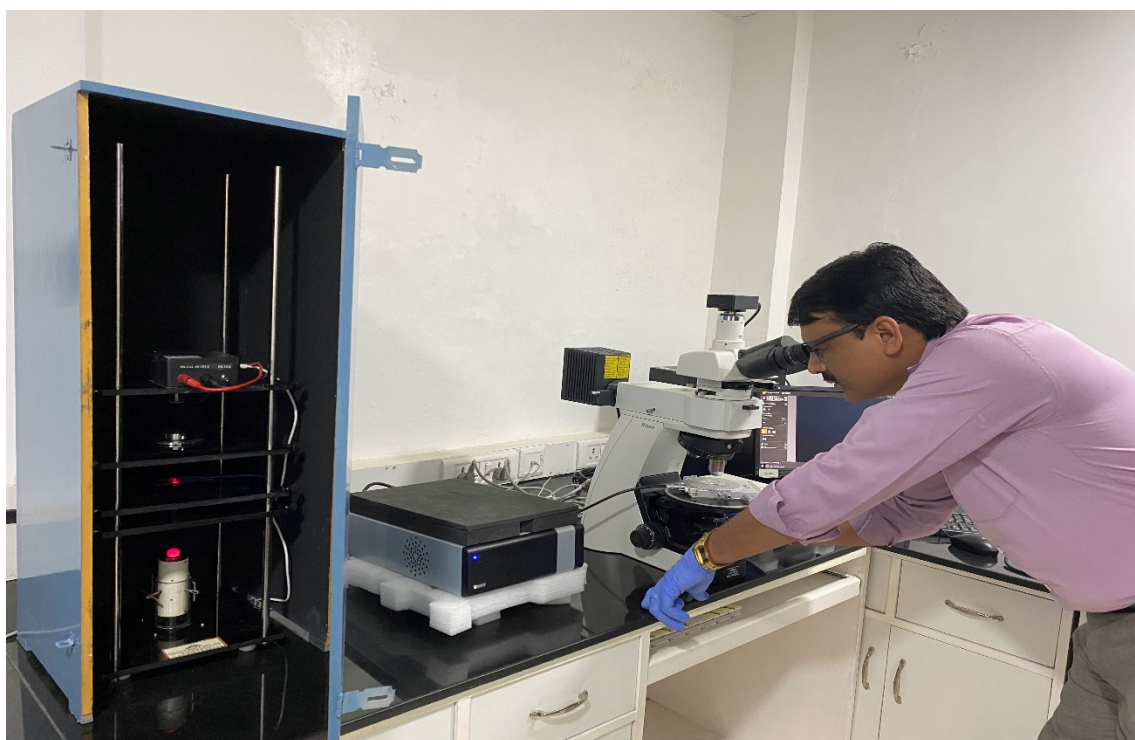
CUCIF Sophisticated Instrumentation – II is known for advanced facilities required for specific domains such as material research, life sciences research and basic sciences research. The CUCIF sophisticated instrumentation – II houses multiple cabins and the detail of equipment are listed in table 3. The facility is housed at Babbage block 5th floor.

Table 3: List of equipment in CUCIF – Sophisticated Instrumentation – II

S.NO.	Equipment's
1.	Electro optic setup
2.	Spin coating unit
3.	Rotary evaporator
4.	DSO
5.	Celfrost refrigerator
6.	Vacuum pump
7.	Ice machine
8.	Deep Freezer
9.	Biological safety cabinet
10.	Co2 incubator
11.	Vortex

Facility Details

The details of facility housed at CUCIF – Sophisticated Instrumentation – II are given in this section



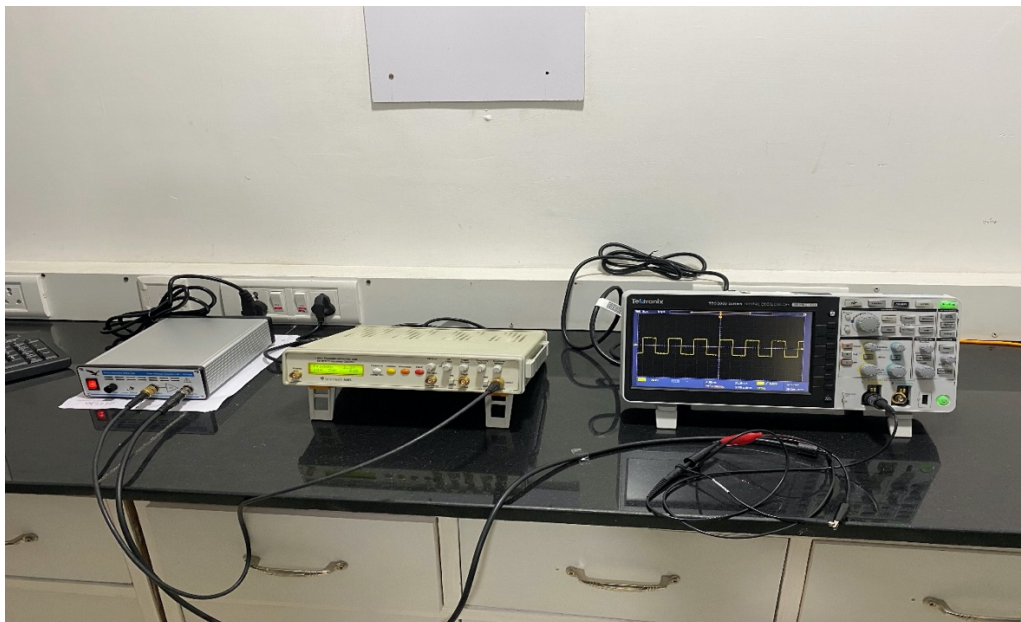
Electro-optic setup



Spin coating unit setup



Rotary evaporator setup



Digital storage oscilloscope (DSO) and function generator



-20°C Celfrost refrigerator



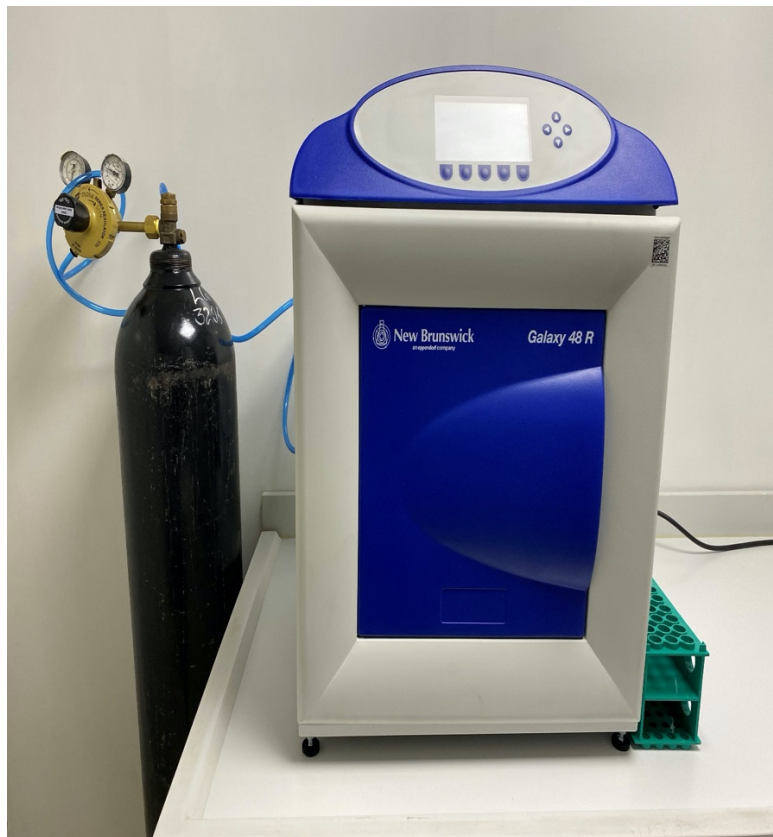
Ice Machine



-80°C Deep Freeze



Biological safety cabinet



CO₂ Incubator



Vortex